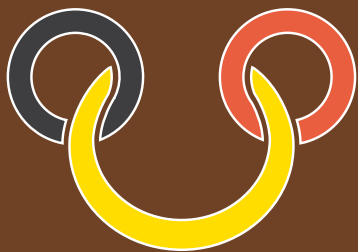




Alex Arkink

German Red Cattle

ANGLER



GGI-SPERMEX

Genetics made in Germany



Angler ...

- ... have great components in line with high milk production
- ... have good calving traits
- ... have outstandingly healthy and robust hooves
- ... have very good udder health
- ... reach low calving intervals through their high fertility
- ... can also excel with good beef production

HISTORY OF THE ANGLER BREED

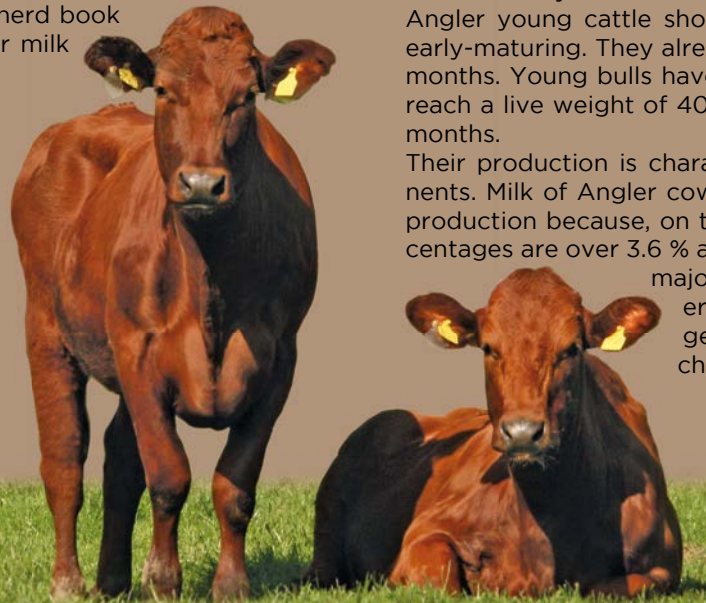
German Red Cattle, also called “Angler“, named after the peninsula Angeln surrounded by the Flensburg fjords and the Schlei have been existing probably for more than 5,000 years. They were mentioned in a written document in their region of origin by around 1600 where they were bred systematically from 1830 as well. A central herd book has been kept in Süderbrarup, in the heart of the region, since 1879. There was already a central committee for bull licensing at this time and all Angler herd book animals have been under milk recording since 1906.

WHAT ARE THE STRONG POINTS OF THE ANGLER BREED?

The recent breeding goal of German Red Cattle aligns to 9,500 kg milk with 4.8 % fat and 3.8 % protein. Mature cows should reach a sacral bone height of around 145 cm and a live weight of 650 kg.

The strengths of the breed are especially in the economic proportion of overall feed effort to milk production and high protein values. Angler cattle have excellent feet and legs with firm, typically dark hooves. They are known for trouble-free calving. Angler young cattle show a vital growth and are early-maturing. They already calve at the age of 24 months. Young bulls have a good growth rate and reach a live weight of 400 kg at the age of twelve months.

Their production is characterized by high components. Milk of Angler cows is excellent for cheese production because, on the one hand, protein percentages are over 3.6 % and, on the other hand, the majority of sires used is carrier of the Cappa-Casein B gene resulting also in good cheese dairy characteristics.



Average production in 2017

7,677 kg milk

4.58 % fat 352 kg fat

3.60 % protein 277 kg protein



ANGLER GENOMICS

Genomic breeding value estimation has been established at the beginning of 2016 which also means there are no more traditional test bulls available. Based on approx. 8,000 daughter proven sires and about 12,000 female animals from Germany and Scandinavia, solid data reliability is available so that reliabilities of calculated genomic breeding values are at ca. 60%. Through early identification of negative breeding traits only bull calves are purchased that can bring substantial improvement for economically important traits, especially functionality. Moreover, linear profiles on genomic basis are available for all geno-typed bulls. Through these matings trait improvement can be made even more precise than before.

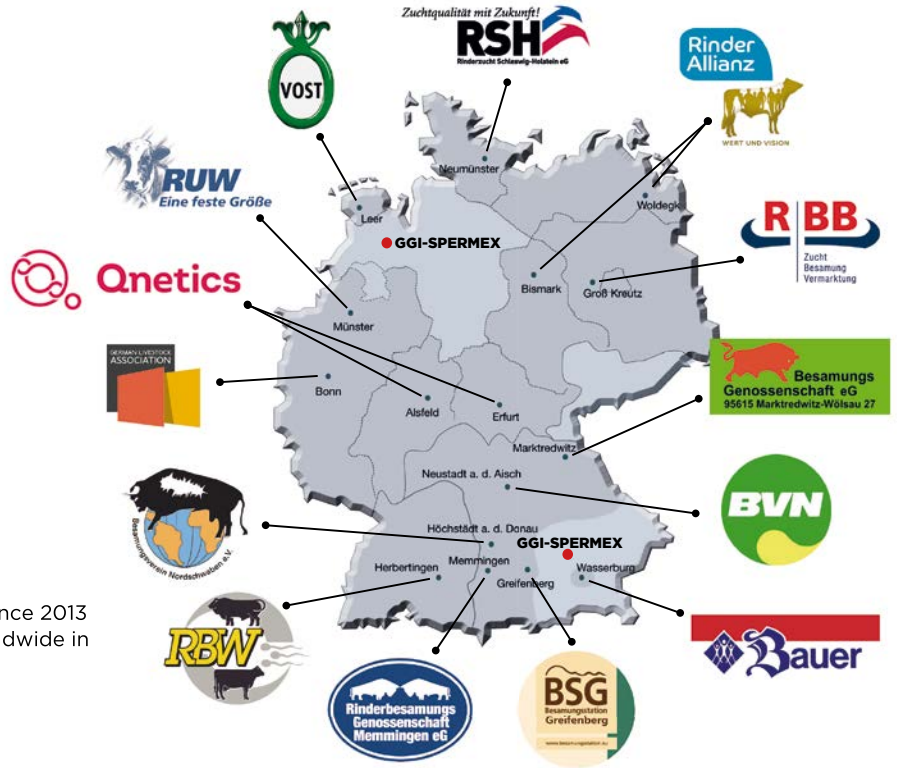
BREEDING PROGRAM

Approx. 15,000 Red cattle cows in Germany are under milk recording, 12,000 of them are registered in the herd book. Those are the active breeding population. 50 bull dams are selected for the breeding program every year and – besides several outstanding young females – are mated with the top sires for the next sire generation. In the Angler breeding program, sires of sons from Scandinavia, mainly Danish Red (RDM) and Swedish Red (SRB), are also used besides proven sires. The Ayrshire breed is used via Finnish and Canadian bloodlines. Therefore, high breeding progress and wide variety in the gene proportions are guaranteed.



GGI-SPERMEX Genetics for your herd's progress

- Newly founded in 2018 from the two largest well-established German export organizations **GGI German Genetics International GmbH** and **SPERMEX GmbH**
- Representing 13 German herd breeding associations and A.I. centers
- Unique portfolio of more than 30 dairy and beef breeds as well as dual-purpose and specific local breeds
- Decades of expertise in sales and deliveries to more than 80 countries worldwide
- Production of sexed semen of different breeds since 2013 in one of the state-of-art sexing laboratories worldwide in Cloppenburg, Germany



GGI-SPERMEX
Genetics made in Germany

GGI-SPERMEX GmbH

Am Osterfeld 14
49661 Cloppenburg-Bethen
Germany

Phone: +49 4471 - 9174 -0
Fax: +49 4471 - 9174 -74

email: info@ggi-spermex.de
Internet: www.ggi-spermex.de

Ottostraße 26
85521 Ottobrunn
Germany

Phone: +49 89 - 665906 -40
Fax: +49 89 - 665906 -42

email: info@ggi-spermex.de
Internet: www.ggi-spermex.de