



Much attention was paid to the GGI presentations: Lonar daughters on stage at EuroTier 2014

Photo: RSH

## GGI members' Holsteins attracted most attention by visitors

The 11<sup>th</sup> fair "EuroTier" took place in Hanover from November 11<sup>th</sup> to 14<sup>th</sup> 2014. The world's leading trade fair for animal production was a complete success with 156,000 national and international visitors as well as 2,360 exhibitors from 49 countries. On our large joint stand with our seven members, we were positioned close to the "TopTierTreff" and, therefore, where everything happened. Many interested visitors and customers from Germany and abroad came to our joint stand and took the opportunity to inform themselves about the latest developments in German Holstein breeding.

As a highlight, the visitors were able to see eight selected daughter groups of current top bulls of our members in the center of our stand. The experts of our breeding organizations presented the daughter groups on stage of the TopTierTreff twice a day, attracting great interest. Here is a brief summary of the 5 Holstein, 2 Red Holstein and 1 Angler progeny groups shown there: The presentation did not start with a daughter proven newcomer, but good old **LONAR**. His progeny were already presented successfully and enthusiastically at member shows and even the German Holstein Show. Two second crop daughters in second lactation were part of the Lonar daughter group at EuroTier. They presented themselves balanced and dairy in a deep black garment. Besides their harmonious conformation, the animals excelled

with notably good bone quality and firm udders with strong suspensory ligament. **LENNOX** can be characterized as outcross bull as he does not have any blood of O-Man, Shottle and Goldwyn. His daughters were strong for type with lots of harmony and sufficient frame as well as body depth. Their correctly sloped rumps shined with length and width. The Lennox daughters moved very well on their slightly angled feet and legs with dry hocks and high foot angles. The well and firmly attached udders showed a good suspensory ligament. Lennox additionally offers good milk production with high components. Newcomer **MONITOR** was represented by a daughter group from his first daughter proven breeding value. The group presented itself uniformly dairy, with lots of



Sterngold daughter group at EuroTier

width in the front end and good body depth. With medium dairy type, harmony and the strong topline as well as the well-sloped and wide rumps the group excelled especially. Correctly set feet and legs with high, closed hooves enabled good locomotion. The highly and widely attached udders with strong suspensory ligament have to be praised as well. Moreover, Monitor transmits good milk production with high protein percentages, convincing also for the fitness traits, udder health and daughter fertility. **STERNGOLD** daughters did not only enjoy great popularity at EuroTier, but also do so in the barns. With medium frame, they showed an enormous quality for feet and legs, enabling a long healthy life in free stall barns. In addition to their good feet and legs, the Sterngold daughters could also shine with outstanding udders. They presented themselves very balanced and had the desired teat placement and teat length. The characteristics described above make Sterngold – with RZRobot 136 – leader of the top list for bulls being suitable for milking robots. The set of **ELBURN RC's** daughter group was exemplary for a red carrier because there were two Black & White and one Red & White daughter. Besides colors, the shown animals outstandingly represented their sire's transmission profile. They were animals with a lot of stature, good strength and sufficient, slightly sloped rumps.

continued on next page

Continued: page 1

Beside harmonic body stature, they also excelled with dry hocks and strong hooves with high foot angles as well as firm udders. The combination of these traits makes them robust, long-living free stall barn cows that – in combination with high milk yield – make every dairy farmer’s heart beat faster. The daughters of the all-round sire **CARIE** presented themselves with medium dairy type, as framy animals with good harmony. They stood out with body depth and strength, hav-



Carie daughter group

ing lots of substance and capacity with level, very wide rumps. Slightly steep set, optimal-

ly angled feet and legs enabled very good locomotion. In addition to good bone quality, they also had high, closed hooves. Udders were sufficiently high and wide attached, with good texture and teat placement. Carie is a fitness sire, having strengths in the transmission for feet & legs and production. The presented Carie daughters were in second lactation and classified with at least 84 points.

The **LARON P** daughters represented a polled Holstein sire as the only group, being dairy, elegant animals with adequate body depth and good dairy type. Their level to slightly sloped rumps are of sufficient width and enable trouble-free calvings. Correctly angled and parallel set feet and legs with dry hocks guarantee very good locomotion. The firmly attached udders showed a strong suspensory ligament with correctly placed teats. In addition to this good conformation transmission, Laron P also convinces with good milk yield and positive components. The three daughters of the Angler bull **ELKOR** were very well-received here and internation-



Elkor daughters on the 'TopTierTreff' stage

ally. Elkor already enthused with a great progeny group at the International Red Cow Conference 2013 in Süderbrarup. His daughters in Hanover presented themselves not only very strong for conformation and as long-living animals, but also excelled with their outstanding milk productions. We would like to thank our members and the hard-working helpers for the great co-operation during the entire fair and we are all looking forward to 2016 when gates open again for next EuroTier from November 15<sup>th</sup> to 18<sup>th</sup> 2016.

## RZRobot: Breeding value for AMS farms

A new breeding value was developed specifically for farms with automatic milking systems (AMS) in order to facilitate particular bull selection.

In modern dairy farming the use of automatic milking systems is well established, but they make certain demands on traits which can be influenced by breeding. For farms using milking robots certain traits like udder composition and milkability are of great importance and, therefore, relevant for being selected. The German Holstein Association (DHV) and the data center vit in Verden built up a new index – especially for these farms –, allowing dairy

farmers to make a quick and reliable bull selection against the background of cows suitable for milking robots.

The RZRobot is composed of the traits milkability, somatic cell score, feet and legs, udder, rear teat placement and teat length. These six traits have different weight within the RZRobot. Minimum requirements were defined for the traits milkability, rear teat placement and teat length. Moreover, it was arranged that the RZRobot is only published when it is  $\geq 100$  in order to guarantee that the bull positively influences his daughters’ suitability for milking robots.

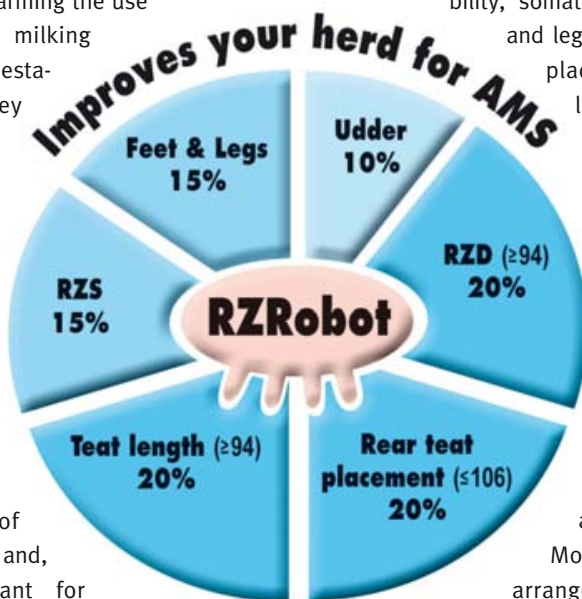


Table: GGI top RZRobot bulls

	Name	Hb. No.	RZRobot	Rel. %
Holstein	<b>Sterngold</b>	676534	<b>136</b>	95
	<b>Goldday</b>	635357	<b>135</b>	98
	<b>NOG Jelvin</b>	490984	<b>132</b>	76
	<b>NOG Jamar</b>	491097	<b>131</b>	79
	<b>Xavi</b>	149908	<b>131</b>	73
	<b>Golden Way</b>	636144	<b>131</b>	92
	<b>Xapper</b>	841021	<b>128</b>	76
	<b>Glabot</b>	567460	<b>128</b>	81
	<b>Anglo</b>	505681	<b>127</b>	96
	<b>Xavier</b>	841015	<b>126</b>	81
	<b>Blossom</b>	681116	146	64
	<b>Epitom</b>	570431	142	67
	<b>Best Off</b>	680232	137	65
	<b>Golem</b>	804331	136	67
	<b>Log-In</b>	678315	135	68
	<b>Ghost</b>	679453	135	67
<b>Klose</b>	823104	133	64	
<b>Snowfox</b>	619061	133	68	
<b>Erdal</b>	151553	133	67	
<b>Torben</b>	619032	132	68	
Red Holstein	<b>Vincente</b>	297788	<b>138</b>	94
	<b>Edway</b>	597775	<b>133</b>	83
	<b>Carie</b>	599452	<b>130</b>	88
	<b>Maydream</b>	917305	<b>127</b>	82
	<b>Mallow</b>	917250	<b>126</b>	84
	<b>Aval</b>	597177	<b>124</b>	97
	<b>Rhodis</b>	148568	<b>123</b>	70
	<b>Remake P</b>	917391	<b>121</b>	74
	<b>La Crosse</b>	297829	<b>120</b>	81
	<b>Madeira</b>	917194	115	79
	<b>Elspe</b>	917427	134	68
	<b>Filias</b>	588011	133	68
	<b>Copper P</b>	917443	133	68
	<b>Effort</b>	917530	132	64
	<b>Ellmau</b>	917425	132	68
	<b>Poulux PP</b>	924720	131	65
<b>Algo</b>	151538	130	66	
<b>Slim P</b>	917527	130	64	
<b>Travel</b>	917536	129	64	
<b>Devil Red</b>	588044	129	67	



## December proof run of GGI top daughter proven sires

The breeding value list of December was a little confusing. This is based on a change of the estimation formula for conformation. Due to this change, there were deviations of up to 5 RZE points for particular bulls.

**Elburn** did not suffer from this. He established himself in the top list having more than 500 daughters now. However there is a newcomer on top. **Lennard** is one of the many new O-Man grandsons who directly led the list due to his high transmission for milk yield, positive components and good fitness values with his first nearly 60 daughters. Another newcomer who is also a grandson of O-Man is **Dotch**. As for **Lennard**, he shows an interesting sire line-up and excels espe-



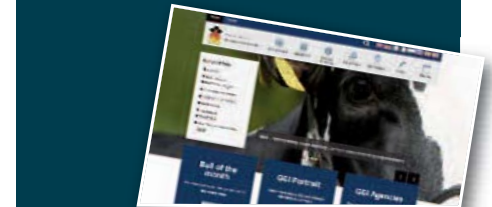
**Lennard** daughter **GIMPEL**

cially with his very high production transmission. Besides these new sires, the Planet sons also held their rankings. First and foremost **Pazzini** and **Pelegriano**. The development of **Goldday**'s breeding value for conformation is very pleasing. He clearly gained with almost 4,000 daughters now so that not even the interesting newcomer **Xapper** was able to steal his crown.

Among the Red Holsteins, there is a newcomer on top of the conformation sires: **Dertour**. His first, almost 30 classified daughters increased his genomic RZE significantly. At the same time, Dertour also offers good production and high protein percent so that he also easily leads the list for RZG. Former No.1

**Malden** has to accept second rank even though he clearly won for conformation. The same is true for good old **Tableau**

Find our event schedule and progeny videos on our homepage [www.ggi.de](http://www.ggi.de)



whose figures are now based on almost 8,000 daughters.

The half brothers **Lasse P** and **Laron P** are pleasantly stable and also rank in the Top-10. Indeed not as high, but at least just as interesting is the Lawn Boy free polled sire **Remake P** who also impresses for conformation.



**Xapper** daughter **XAVIERA**



**Dertour** daughter **PIZZA**



**Laron P** daughter **CLEOPATRA**

## GGI applicaton for mobile devices lets you select bulls everywhere

In future, you will have GGI always available – wherever you are. From now on, you can browse the bull portfolio of GGI and many more using your smartphone or Tablet – both for Android and iOS – even



without Internet connection.

Easy to understand and with a few clicks, you have access to our bull portfolio. Holsteins, Red Cattle/Angler, Red and White DP, beef and dual purpose breeds as well as Fleckvieh/Simmental are well-arranged and fully represented. Lists for polled and sexed bulls, but also for hereditary traits like Kappa Casein, Beta Casein as well as aAa code can be easily found.

You can simply filter and sort according to your wishes in the bull lists. Move bulls you want to have a closer look at to favorites. "Favorite" bulls can be filtered or marked by several criteria. Recommend interesting bulls quickly to your contacts via Twitter,

Facebook or email.

Latest news on cattle breeding as well as events of our members are summarized for you in the app.

The GGI App is available in German and English language. More languages are currently being prepared.

You can access the free GGI App directly on your device under [www.ggi.de/app](http://www.ggi.de/app).

Moreover, you can scan the following QR code with your smartphone or Tablet:





# Current proofs of GGI top daughter proven sires

(December 2014)



Holstein

Red Holstein

Name	Herbbook No.	Interbull No.	Sire	Dam's Sire	Milk-kg	Fat-%	Fat-kg	Protein-%	Protein-kg	RZM	Rel. RZM in %	Daughters	Herds	Dairy type	Body	Feet & Legs	Udder	RZE	RZS	RZN	RZR	RZG	Calving ease	Brachyspina	Polled	aAa	Name
Lennard	822437	DEU 000353831144	Legend	Ramos	+1494	+0.08	+69	+0.14	+66	137	87	59	39	120	104	111	98	108	120	122	118	147	107	BYF	n.a.	Lennard	
Pazzini	822384	NLD 000525966931	Planet	Goldwin	+1457	+0.00	+60	+0.07	+57	131	96	185	82	112	89	107	106	105	119	124	116	142	100	BYF	135264	Pazzini	
Enzo	675261	DEU 000534901479	Encino	O-Man	+2211	-0.29	+58	+0.00	+75	140	95	123	106	91	100	109	79	90	116	119	106	141	112	BYF	n.a.	Enzo	
Dotch	822436	DEU 001503818433	Dotson	Elegant	+2312	-0.35	+55	-0.10	+67	134	84	44	29	88	98	122	99	107	96	115	116	141	109	BYF	315246	Dotch	
Elburn	636446	NLD 000359507595	Mr.Burns	O-Man	+1888	-0.38	+36	+0.05	+70	134	98	529	286	102	119	118	107	118	100	115	109	140	88	BYF	312456	Elburn	
NOG Jeto	490920	DEU 000116481642	Juwel	Laudan	+2578	-0.39	+60	-0.18	+67	135	97	248	108	113	76	136	99	110	97	109	99	138	104	BYF	651243	NOG Jeto	
Pelegrino	636593	DNK 003372304303	Planet	Laudan	+2096	-0.28	+55	-0.08	+62	132	94	148	86	121	93	100	116	110	108	121	101	138	103	BYF	351246	Pelegrino	
Giabo	677301	DEU 000536124807	Gibor	Shottle	+1638	-0.32	+33	+0.03	+59	128	90	100	70	82	84	114	84	87	105	119	119	136	115	BYF	n.a.	Omagic	
Stalone	804210	DEU 001270523676	Stylist	Toystory	+2103	-0.22	+62	+0.07	+79	143	95	179	40	106	69	98	94	87	110	115	88	137	122	BYF	312546	Stalone	
Paston	822383	NLD 000525966861	Planet	Goldwin	+1324	-0.24	+30	+0.14	+60	128	98	380	135	102	79	109	111	104	120	121	101	137	103	BYF	234165	Paston	
Omagic	674301	DEU 000580388142	O-Man	Lambada	+1719	-0.02	+68	-0.04	+54	129	95	120	80	72	84	114	84	87	105	119	119	136	115	BYF	n.a.	Omagic	
Borsati	811243	DEU 000535421312	Bolton	O-Man	+2227	-0.26	+62	-0.07	+68	136	99	1261	370	111	122	96	128	123	119	101	94	136	87	BYF	312456	Borsati	
Jentin	822385	DEU 001500977836	Jeeves	Goldwin	+1231	+0.09	+60	-0.06	+35	118	95	171	92	109	97	116	115	116	118	122	121	136	101	BYF	213645	Jentin	
Juwentus	840928	DEU 000663196060	Juwel	Manager ET	+2199	-0.37	+49	-0.14	+59	129	95	134	60	74	88	112	97	96	115	115	112	136	104	BYF	n.a.	Juwentus	
Jugador	811214	ITA 019990478137	Jardin	Finley	+2340	-0.47	+43	+0.07	+88	145	93	83	58	103	122	106	105	112	95	96	94	136	77	BYF	126345	Jugador	
Blugiat	822420	DEU 001501013201	Planet	Shottle	+2051	-0.33	+48	-0.14	+55	127	86	78	51	108	108	111	110	114	111	126	97	135	103	BYF	n.a.	Blugiat	
Playe Bay	637089	DEU 000663622761	Bogart	Goldwin	+1161	+0.06	+53	+0.06	+45	123	90	102	61	109	106	116	108	114	111	116	118	135	105	BYF	324156	Blue Bay	
Pernod	148598	FRA 002141060249	Planet	O-Man	+1687	-0.13	+56	-0.08	+49	125	88	65	52	92	98	110	108	107	111	121	109	135	110	BYF	n.a.	Pernod	
Manpower	568557	DEU 000120054314	Man-O-Man	Goldwin	+826	+0.33	+66	+0.28	+55	132	93	193	115	114	108	105	94	103	96	116	112	134	104	BYF	234156	Manpower	
Monitor	149907	NLD 000543787792	Man-O-Man	Bolton	+1131	+0.01	+47	-0.18	+52	127	95	279	164	119	116	108	112	118	103	114	111	134	105	BYF	423165	Monitor	
Pinolo	822391	FRA 002141060248	Planet	O-Man	+2038	-0.23	+58	-0.08	+60	131	94	136	67	110	107	94	112	107	112	116	100	134	99	BYF	342156	Pinolo	
Pinto	148562	NLD 000530632744	Planet	O-Man	+649	+0.38	+64	+0.16	+37	121	92	90	55	93	97	111	115	112	113	122	108	133	107	BYF	n.a.	Pinto	
Mabuse	841016	DEU 000663524008	Man-O-Man	Shottle	+1265	-0.16	+35	+0.01	+44	120	87	95	56	119	114	120	109	121	108	124	108	133	103	BYF	342156	Mabuse	
Jerado	811320	NLD 000545851587	Jeeves	O-Man	+734	-0.02	+28	-0.02	+27	109	93	125	52	70	95	125	111	112	108	131	127	133	104	BYF	312456	Jerado	
Man Igloo	822418	CAN 000106546094	Man-O-Man	Goldwin	+1022	-0.10	+32	+0.12	+47	121	85	48	33	118	104	126	111	122	108	111	115	133	107	BYF	132645	Man Igloo	
Macleo	811359	NLD 000696430747	Man-O-Man	Goldwin	+528	+0.24	+45	+0.19	+36	118	92	161	77	119	130	129	113	132	115	116	112	133	108	BYF	324156	Macleo	
Gismo	677194	DEU 000535854166	Gibor	Shottle	+1130	-0.07	+40	+0.04	+42	119	94	136	98	81	91	120	100	103	131	120	108	133	97	BYF	231465	Gismo	
Manzini	811244	DEU 001500151755	Mac	O-Man	+1237	+0.00	+51	-0.15	+26	111	97	272	88	116	97	116	128	125	111	124	122	132	108	BYF	132564	Manzini	
Playa	677510	NLD 000530632922	Planet	O-Man	+1038	+0.06	+48	-0.10	+45	123	94	160	120	104	102	110	108	110	105	122	109	132	105	BYF	312456	Playa	
Easyjet	840991	DEU 000532878649	Eleve	Lou	+1910	-0.46	+28	-0.11	+53	123	94	127	64	124	94	105	122	117	115	106	116	132	109	BYF	342165	Easyjet	
Fidorra	804256	DEU 001303818266	Focus	Mr.Sam	+1170	+0.08	+56	-0.05	+35	117	86	61	21	86	102	116	103	107	123	123	115	132	130	BYF	n.a.	Fidorra	
Mosaik	149903	NLD 000525455376	Man-O-Man	Shottle	+1137	-0.04	+43	+0.17	+55	128	80	37	21	109	113	112	103	113	112	111	102	132	99	BYF	n.a.	Mosaik	
Sacramento	637086	DNK 000534802808	Socrates	Shottle	+1067	+0.09	+52	-0.05	+31	114	80	55	39	110	114	108	125	124	126	127	102	132	90	BYF	n.a.	Sacramento	
Xano	677661	DEU 000769277902	Xacobeo	O-Man	+1779	-0.30	+40	-0.02	+58	128	89	101	78	109	97	120	95	106	104	112	105	132	106	BYF	132456	Xano	
Marmorall	677507	DEU 000536124810	Gibor	Wizard	+1192	-0.12	+36	-0.04	+36	115	93	121	89	96	90	110	114	109	114	121	121	131	106	BYF	324156	Marmorall	
Jericho	677508	DEU 000535936384	Jeeves	Buckeye	+1017	-0.10	+32	-0.15	+19	105	94	162	121	115	88	114	120	117	106	141	124	131	109	BYF	342165	Jericho	
Jotano	811363	DEU 001501189715	Jake	Shottle	+1843	+0.00	+76	-0.09	+53	130	86	72	37	106	115	91	104	104	107	115	106	131	103	BYF	342156	Jotano	
NOG Bero	490777	NLD 0004490916180	Bolton	Best	+1914	-0.17	+60	+0.00	+65	135	93	85	47	111	105	117	108	116	93	108	84	131	97	BYC	431266	NOG Bero	
Billard	676026	DEU 000535272163	Billion 3	O-Man	+1746	-0.21	+49	-0.03	+56	128	96	169	134	120	115	104	108	114	112	108	105	131	106	BYF	342165	Billard	
Bordun	804258	DEU 001304043529	Bolton	O-Man	+1036	+0.07	+49	+0.03	+38	119	93	192	72	103	88	120	119	117	125	114	102	131	87	BYC	423516	Bordun	
Goldday	635357	NLD 0004475750563	Goldwin	O-Man	+623	-0.16	+10	-0.10	+31	109	99	3978	1586	122	131	133	129	144	104	134	118	131	111	BYF	234165	Goldday	
Sterngold	676534	DEU 000535278625	Stol Joc	Shottle	+1106	-0.28	+17	-0.06	+31	110	99	1292	784	91	89	128	114	116	137	127	104	131	113	BYF	234156	Sterngold	
Omaru	674029	DNK 002981401898	O-Man	Lambada	+1307	-0.02	+51	+0.09	+53	127	94	99	80	83	112	113	83	97	108	116	107	131	113	BYF	n.a.	Omaru	
Omjet	673219	DNK 002371401544	O-Man	Winchester	+745	+0.45	+74	+0.22	+74	128	99	3091	1006	78	110	92	101	96	110	118	105	131	111	BYF	153246	Omjet	
Xavier	841015	NLD 000543414814	Xacobeo	O-Man	+1562	-0.32	+30	+0.02	+55	125	91	127	64	102	100	109	108	109	100	112	109	130	107	BYF	423651	Xavier	
Dertour	599474	NLD 000535216372	Destry	Malvol	+1025	-0.51	-2	+0.14	+47	115	89	112	80	120	117	124	142	143	106	118	124	137	99	BYF	324156	Dertour	
Malden	917298	DEU 000535762066	Malvol	Mascot ET	+1671	-0.32	+40	+0.02	+58	126	95	152	95	103	87	139	108	119	115	113	103	137	111	BYF	351426	Malden	
Lasse P	923156	DEU 000662992189	Lawn Boy	Classic PS	+1181	+0.02	+51	+0.13	+52	125	96	225	129	104	92	117	106	109	117	117	103	133	108	BYF	423651	Lasse P	
Madeira	917194	DEU 000535256622	Malvol	September	+2054	-0.44	+42	-0.09	+61	127	92	106	90	108	117	125	105	120	99	108	108	133	104	BYF	n.a.	Madeira	
Maico	917288	DEU 000535786947	Malvol	Ramos	+1887	-0.26	+53	-0.11	+54	125	95	196	143	91	100	116	95	103	97	119	115	132	106	BYF	534162	Maico	
Curling	917395	FRA 001408205562	Curis	Canvas	+1264	+0.24	+75	+0.22	+64	135	83	49	42	91	94	118	107	109	103	105	84	132	115	BYF	516432	Curling	
Lightway	923004	NLD 000491286628	Lightning	Ronald	+907	-0.09	+30	+0.19	+47	120	93	8															



# December proof run of GGI top G-Genomic sires

Since December, there has been a new leader with the two brothers **Chevalier** und **Cinema**, but Cinema seems to play in a completely different league with RZG 173 and more than +3,500 kg milk. Besides his outstanding transmission for production, this sire of sons, sought-after worldwide, also shines for all other traits. The same can be said about Chevalier who has to accept the second rank despite higher fitness values and his “only” +2,500 kg milk. Besides “old” sires like Background, Fergus and Gandhi, newcomers like **Shorttrack**, **Blossom** and **Jamming** can be recommended for wide spread use.

Not as high as Cinema, but having a complete breeding value profile anyway, bulls like **Blue P**, **Castino P**, **Smile P** and **Eagle P** reach a good level.

Among the Red Holsteins, polled sires like **Label P** have already reached an absolute top level and also the current list leader offers the polled gene: **Apoll P**. Adding to this, there is good conformation, an excellent value for longevity and more than +2,900 kg milk. High transmission for milk yield in combination with very good components make **Drummer** rank highly as well. **Red Power** is also characterized by high components. In addition to good production, the transmission for conformation is a great plus for the two newcomers **Matisse Red** and **Bigstar-Red**.



Among the Red Holsteins, polled sires like **Label P** have already reached an absolute

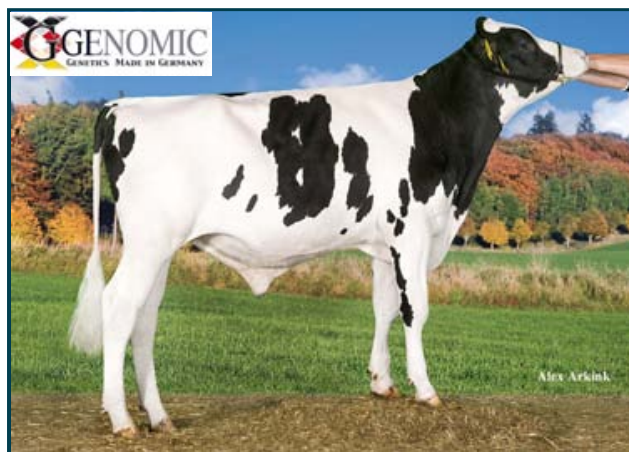
## **Cinema 151578** (Chevrolet x Snowman x Shottle x Boliver)

CVF BLF BYF  
aAa 435216



Scan QR code for detailed online breeding values

Cinema is the first bull in the long history of German Holstein breeding, to have broken the barrier of 170 RZG points. Amongst other things, this is based on the fact that he also sets a new record with his transmission for milk production of more than 3,500 kg milk and he reaches an excellent +229 kg of fat and protein despite average components. Cinema and his full brother Chevalier descend from the Danish cow Heaven, who is the sister of our bulls Snowline and Robo. This shows that the cow family, sought-after internationally, of our new No.1 already proved its qualities a long time ago! The transmission profile shows Cinema as an outstanding production sire, but he is also way above average for longevity and udder health. For conformation transmission, Cinema is very balanced at a high level with particular strengths for feet and legs. A bull like Cinema can undoubtedly be recommended for widespread use because he excels in all traits and he will clearly improve the productivity of herds.



	88	100	112	124
Dairy Character (Index)				110
Body (Index)				111
Feet and legs (Index)				125
Udder (Index)				112
gRZE (Index)				123

Proofs 2014/12

## **Apoll P 924726** (Aikman RDC x Lawn Boy P x Shottle x Marmax RDC)

CVF BLF BYF  
aAa 243615



Scan QR code for detailed online breeding values

The highest, brand-new Red Holstein sire by RZG, Apoll P, is now available. He was not included in the breeding value lists from December as there was not much semen available at that time, to adequately meet breeders' demands. Apoll P is a son of the internationally well-known Candlelight VG 86 (s. Lawn Boy) and proves again that the quality of polled bulls is at the same level as their horned contemporaries. His dam is one of the highest Red, polled cows worldwide and can be traced back to eight generations of cows classified VG or EX. The All-American and All-Canadian Cow, Continental Scarlet Red EX 95, is really something very special. Besides outstanding transmission for milk production, this Aikman son Apoll P shows top figures for conformation and fitness traits. Having high values for conformation, as well as for type and udder, he promises stylish and correct daughters strong for type. His positive figures for calving ease will give easy calvings. Apoll P offers everything a good bull needs and, in addition, he is polled!



	88	100	112	124
Dairy Character (Index)				127
Body (Index)				111
Feet and legs (Index)				116
Udder (Index)				125
gRZE (Index)				130

Proofs 2014/12

# Current proofs of GGI top G-Genomic sires

(December 2014)



Name	Herdbook No.	Interbull No.	Sire	Dam's Sire	Milk-kg	Fat-%	Fat-kg	Protein-%	Protein-kg	gRZM	Rel. gRZM in %	Dairy type	Body	Feet & Legs	Udder	gRZE	gRZS	gRZN	gRZR	gRZG	Calving ease	Brachyspina	Polled	aAa	Name
<b>Cinema</b>	151578	DNK 003372306258	Chevrolet	Snowman	+3566	-0.20	+120	-0.10	+109	167	71	110	111	125	112	123	114	124	100	173	106	BYF	n.a.	Cinema	
<b>Chevalier</b>	619100	DNK 003372306253	Chevrolet	Snowman	+2577	-0.09	+96	-0.05	+81	149	71	106	114	124	115	125	119	132	116	166	107	BYF	n.a.	Chevalier	
<b>Background</b>	619088	DEU 000666268036	Beauty	Freddie	+2151	-0.07	+80	-0.03	+69	140	71	105	116	118	125	128	131	132	116	161	101	BYF	321465	Background	
<b>Mandela</b>	823081	NLD 000916344441	Mogul	Super	+1773	+0.09	+82	+0.14	+76	145	73	107	108	117	111	117	117	130	118	160	106	BYF	153624	Mandela	
<b>Fergus</b>	804338	DEU 000356650078	Fanatic	Snowman	+2719	-0.20	+88	-0.08	+83	148	71	117	112	125	118	128	115	124	103	159	106	BYF	342516	Fergus	
<b>Skagen</b>	619099	DEU 000666422455	Shotglass	Beacon	+2479	-0.16	+84	-0.03	+80	146	71	108	101	116	111	115	122	130	104	159	115	BYF	n.a.	Skagen	
<b>Marigo</b>	619098	DNK 002371402611	Model	Freddie	+1812	+0.01	+75	±0.00	+62	135	71	95	116	117	122	124	114	139	123	158	106	BYF	n.a.	Marigo	
<b>Superior</b>	680959	NLD 000763606749	Supersire	Snowman	+2293	-0.02	+92	+0.02	+80	148	71	113	99	123	110	117	109	131	98	158	113	BYF	n.a.	Superior	
<b>Mocon</b>	823099	DEU 000769953813	Morgan	Snowman	+2212	-0.12	+78	+0.02	+78	145	71	95	96	112	121	116	125	126	105	157	107	BYF	423615	Mocon	
<b>Famasio</b>	571884	DEU 000121218239	Fanatic	Snowman	+2056	-0.15	+67	+0.01	+71	139	71	94	117	120	126	128	131	128	105	157	103	BYF	n.a.	Famasio	
<b>Garden RDC</b>	680952	DEU 000538246062	Galaxy	Elburn	+2069	-0.29	+52	+0.07	+78	141	71	91	105	123	116	120	115	127	112	156	97	BYF	n.a.	Garden RDC	
<b>Gasometer</b>	680760	DEU 000538155646	Galaxy	Shamrock	+1678	-0.13	+55	+0.07	+64	134	71	101	111	122	116	123	113	137	122	156	107	BYF	132546	Gasometer	
<b>Blossom</b>	681116	DEU 000538251988	Boss	Snowman	+1185	-0.07	+42	+0.13	+54	127	71	100	115	139	133	142	139	133	117	156	103	BYF	n.a.	Blossom	
<b>Leno</b>	811484	DNK 003372305890	Lexor	Time	+1206	+0.29	+79	+0.19	+60	136	73	107	103	129	121	127	122	126	120	156	126	BYF	231465	Leno	
<b>Lesson</b>	680950	NLD 000919137781	Let It Snow	Bookem	+1885	-0.16	+59	-0.02	+62	133	71	119	105	127	138	139	122	134	108	156	102	BYF	342561	Lesson	
<b>Mr Max</b>	811488	USA 000071588582	Mogul	Super	+2080	-0.32	+50	-0.11	+59	129	73	102	106	136	134	139	127	138	106	156	111	BYF	n.a.	Mr Max	
<b>Nugget RDC</b>	680244	GBR 388380300287	Número Uno	Destry	+767	+0.52	+82	+0.16	+42	126	73	111	101	131	129	133	122	138	127	155	100	BYF	432516	Nugget RDC	
<b>Lexington</b>	619078	DNK 003372305844	Lexor	Time	+1187	+0.19	+68	+0.20	+61	135	73	115	103	127	123	129	114	130	120	155	123	BYF	321456	Lexington	
<b>Malta</b>	151576	DNK 003372306218	Model	Snowman	+2056	+0.02	+87	-0.03	+67	139	71	112	120	127	120	132	105	130	110	155	100	BYF	n.a.	Malta	
<b>Knobby</b>	507517	USA 000072436797	Cashcoin	Man-O-Man	+1408	+0.12	+70	+0.16	+64	136	71	107	119	122	121	129	124	128	114	155	114	BYF	n.a.	Knobby	
<b>Sinus</b>	804335	DEU 000666268032	Snowmaster	Freddie	+2136	-0.09	+78	-0.03	+69	139	71	96	112	123	119	124	112	128	113	155	102	BYF	423651	Sinus	
<b>Sunglass</b>	680956	DEU 000538246079	Shotglass	Freddie	+1758	+0.26	+100	+0.05	+65	141	71	103	107	111	112	114	127	126	113	155	103	BYF	n.a.	Sunglass	
<b>Gandhi</b>	151577	NLD 000639499642	Galaxy	Beacon	+1142	+0.40	+87	+0.14	+53	132	71	106	108	109	128	124	124	131	126	155	108	BYF	n.a.	Gandhi	
<b>Sinclair</b>	804345	DEU 000538108949	Shaw	Beacon	+1822	-0.01	+73	-0.01	+60	134	71	99	99	114	122	119	119	135	118	155	105	BYF	n.a.	Sinclair	
<b>Garvin</b>	811477	DNK 003001001793	G-Force	Super	+1735	-0.22	+48	+0.08	+68	135	73	101	99	117	116	117	129	130	118	155	106	BYF	315264	Garvin	
<b>Season RDC</b>	680955	DEU 000354494759	Shotglass	Axion-Red	+1983	-0.09	+72	+0.02	+70	139	71	108	94	131	119	124	121	126	103	154	114	BYF	n.a.	Season RDC	
<b>Mercury</b>	619076	DEU 000666188940	Mogul	Domain	+1650	±0.00	+68	-0.02	+54	129	73	110	103	121	135	132	135	134	111	154	113	BYF	243561	Mercury	
<b>Big Point</b>	619043	DEU 000666050471	Bookem	Man-O-Man	+1762	-0.22	+48	+0.07	+67	135	73	113	114	122	126	132	122	133	107	154	110	BYF	315246	Big Point	
<b>Pandoro</b>	571868	DEU 000121142822	Pilot MR	Bookem	+1059	+0.25	+68	+0.29	+65	137	71	119	121	118	105	120	105	128	130	154	115	BYF	n.a.	Pandoro	
<b>Faun</b>	804344	DEU 000356552537	Fanatic	Mascal ET	+1506	-0.04	+58	+0.06	+57	130	71	92	95	132	125	127	124	132	113	153	112	BYF	n.a.	Faun	
<b>Showdown</b>	823100	DEU 001501403906	Shaw	Bogart	+1717	-0.19	+50	+0.07	+66	134	71	93	124	115	121	125	115	134	116	153	97	BYF	n.a.	Showdown	
<b>Flacon</b>	151569	DNK 003372306171	Fanatic	Altalota	+1216	+0.23	+74	+0.06	+48	127	71	93	112	118	123	124	118	137	129	153	111	BYF	n.a.	Flacon	
<b>Magoo</b>	507273	USA 000071588583	Mogul	Super	+1574	-0.06	+59	-0.06	+47	124	73	98	107	134	136	138	113	140	118	153	106	BYF	n.a.	Magoo	
<b>Sirius</b>	151568	DEU 000357063759	Shan	Robust	+1337	+0.18	+73	+0.09	+55	131	71	110	121	123	128	135	122	131	114	153	105	BYF	n.a.	Sirius	
<b>Maxime</b>	680238	DNK 003372306051	Maximum	Time	+1214	-0.13	+36	+0.08	+50	123	72	102	93	122	122	121	132	135	132	153	123	BYF	534162	Maxime	
<b>Lobach</b>	570442	DNK 002371402506	Lexor	Time	+1042	+0.11	+54	+0.21	+57	130	73	114	119	128	132	139	113	128	121	153	112	BYF	234165	Lobach	
<b>Bazaar</b>	507518	USA 000072436762	Mogul	Shamrock	+1243	-0.17	+33	-0.03	+39	116	73	105	115	132	152	151	135	140	118	152	117	BYF	n.a.	Bazaar	
<b>Go Now RF</b>	679573	NLD 000709809726	G-Force	Ralstorm	+1802	+0.02	+76	+0.14	+77	144	73	119	112	125	110	123	124	114	103	152	109	BYF	234156	Go Now RF	
<b>Kayne</b>	811498	GBR 952180626236	Mogul	Domain	+1698	+0.08	+79	+0.01	+59	134	72	113	113	134	135	142	113	126	103	152	112	BYF	324156	Kayne	
<b>Game</b>	680667	NLD 000871871392	Galaxy	Stol Joc	+1439	-0.03	+56	+0.11	+61	132	71	88	98	123	116	117	127	130	113	151	110	BYF	135246	Game	
<b>Melbourne</b>	619081	DEU 000666266206	Meridian	Elburn	+2397	-0.41	+52	-0.12	+67	134	71	99	117	119	125	128	121	125	113	151	108	BYF	324165	Melbourne	
<b>Sund</b>	823069	DEU 000121014038	Suran	Gerard	+1420	-0.08	+50	+0.10	+59	130	71	102	115	135	121	133	120	138	108	151	104	BYF	213645	Sund	
<b>Canyon RDC</b>	680954	DEU 000537994699	Cashcoin	Snowman	+996	+0.16	+57	+0.10	+44	123	71	107	96	134	119	126	136	141	110	151	113	BYF	315246	Canyon RDC	
<b>Pamino</b>	811503	NLD 000762557275	Picanto	Shamrock	+2274	-0.31	+58	-0.19	+56	129	71	113	96	121	120	122	125	139	109	151	111	BYF	n.a.	Pamino	
<b>Bube ET</b>	149986	DEU 000355165348	Beacon	Jeeves	+2055	-0.23	+58	-0.10	+58	130	73	114	104	126	110	121	108	138	121	151	110	BYF	234165	Bube ET	
<b>Apoli P</b>	924726	NLD 000007620420	Aikman RDC	Lawn Boy P	+2969	-0.36	+86	-0.07	+94	152	71	128	111	116	125	130	123	134	99	166	107	BYF	Pp*	n.a.	Apoli P
<b>Effort</b>	917530	NLD 000946768563	Ellmau	Snowman	+2198	-0.28	+64	-0.02	+73	137	71	98	112	133	130	135	127	133	103	159	92	BYF	234156	Effort	
<b>Red Power</b>	924723	DEU 000666354866	PerfectAiko	Fidji	+1056	+0.64	+100	+0.28	+61	137	71	101	105	122	127	127	114	129	118	156	119	BYF	n.a.	Red Power	
<b>Perfection</b>	917574	DEU 000538270556	PerfectAiko	Selayo	+1385	+0.47	+101	+0.19	+65																